

Property Features

16343 Maplewild Ave



Nestled at the end of a long private tree-lined driveway is your ~110 feet of low bank beachfront in the serene community of Three Tree Point.

This contemporary haven offers a unique secluded setting with a spectacular west-facing backdrop of Puget Sound, Olympic Mountains, islands and colorful sunsets. Open great rooms and intimate personal areas for entertaining your many guests or for quiet times relaxing by the waves lapping at your beach. Vaulted ceilings, walls of view windows, numerous decks and patios for integrated indoor/outdoor living. Skillfully remodeled throughout with gorgeous details: gourmet kitchen, 5 bedrooms including 3 master suites with view decks, bonus room, office, storage for water toys, plus a full legal Accessory Dwelling Unit... A rare property.



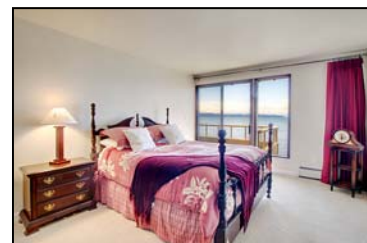
The Kitchen

Designed for the most demanding of chefs, the gourmet kitchen is fully equipped to prepare the most refined dinners for friends and family. Abundant high end cherry cabinets and granite countertops, full extension drawers. Viking professional gas range, refrigerator, microwave, wine center, Bosch double oven, warming drawer and dishwasher. Elegant ceramic tile floor. Built-in china cabinet. Pantry.



Living & Dining

A great room that is truly spectacular with its 20' vaulted ceilings and walls of view windows. Imposing wood burning fireplace. Gleaming Brazilian cherry wide-plank hardwood floors. Sliding glass doors open to the huge entertaining deck (15'X40') with storage closet and water hose. Gas hookup for grill.



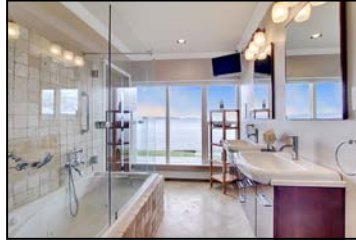
Bedrooms

This haven has 5 bedrooms, a bonus room, and a den with its own wood burning fireplace.

Rare 3 master suites on the same floor with gorgeous bathrooms and view decks. Subway tile, soft designer colors, new vanities and light fixtures.

The main master bedroom is very spacious with a state of the art 5-piece bathroom. Travertine tile, jetted tub, clean-lined dual vanities, double shower with body jets & rain shower. Artistic mosaic tile designs.





Legal Additional Dwelling Unit

The lower level, with its soaring high ceilings, was just completed and turned into a legally permitted ADU.

Fully equipped kitchen with hickory cabinets, slab granite counters, stainless steel appliances. Full bathroom with jetted tub and body jets, glass surround, dual vanity, full size washer and dryer. Good sized bedroom with wall-to-ceiling view windows. Large living room.

Gorgeous travertine tile floors with mosaic designs.

Other new remodeling & highlights

- All new solid cherry two-panel doors + matching framing
- New solid mahogany front door with speak-easy
- New lighting and light fixtures
- New drapes and blinds
- New skylights in entryway
- New sheetrock
- New interior and exterior paint
- New electrical panel and sub panel
- New high efficiency radiant heaters & natural gas fired boiler with 6 zones of heating
- Dual water heaters
- Safe for storing valuables





Waterfront and Grounds

Unparalleled ~110' of low bank waterfront with concrete bulkhead and boulders.

A rare 0.6 acre property with an extremely long private driveway leading to a 2 car-garage and extra paved parking.

New wood and concrete staircases for outside access around the grounds.

New outdoor shower.

Low maintenance professional landscaping with new sod, new lighting, sprinkler system and new block wall.

New storage shed at water level with carriage style garage door.

Storage & Laundry Room

Plenty of storage and closets throughout the home, you will be amazed.

Custom shelving is also added to many closets.

Mud room located immediately by the garage, with wide counter space and cabinets. This room can also be used as a project room as well as a fishing kitchen with its extra deep sink for cleaning fish and crab.

The laundry room, on the bedroom level, is extremely large and has an additional "secret" storage area for larger belongings.

