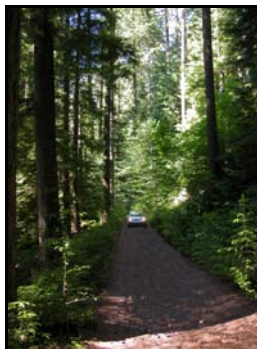


# Mt Rainier Area 20+ acre Estate Quality Land

## Majestic Views in All Directions, Utilities In, Privacy

For more info and Video Tour go to [www.WaterHavens.com](http://www.WaterHavens.com)



**Majestic 20+ acres near the entrance to Mt Rainier National Park, one of only 3 estate lots surrounded by the peace and privacy of National Forest, National Park, & the Nisqually River. This land rises high above the river and valley on a solid bedrock mountain, perched for commanding views in all directions from sunrise to sunset. Just a few miles from peaceful Ashford, you and your guests arrive through a locked gate and private easement cathedral of old protected forest. All utilities are in place, ready for your vision to unfold. Come visit and make this your very special getaway retreat.**

Lot size: 20-24 acres (boundary line adjustment underway)  
Electricity: On property  
Phone: On property  
Water/well: Will be installed

Waterfront: Long shore along Nisqually River  
Views: Valley, Mountains, River, Park, Forest  
Access gate: At entrance, with wiring for remote entry and video camera surveillance  
Designated: Forest land



### Scott Price

Waterfront and Water View Specialist  
Windermere Real Estate South  
(206) 419-7516  
[Scott@WaterHavens.com](mailto:Scott@WaterHavens.com)  
[www.WaterHavens.com](http://www.WaterHavens.com)

**\$249,000**

This is your majestic  
mountain estate getaway

Wold Rd  
Ashford

